



almondsburybusinesscentre



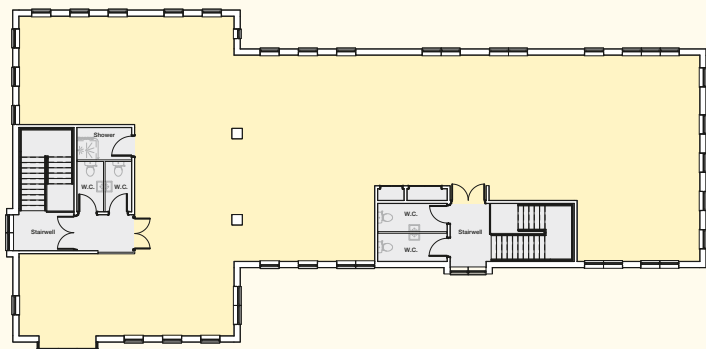
**TO LET**

Refurbished  
First Floor Office

3,402 sq ft (316.04 sq m)

Stanway House

[www.almondsburybusinesscentre.co.uk](http://www.almondsburybusinesscentre.co.uk)

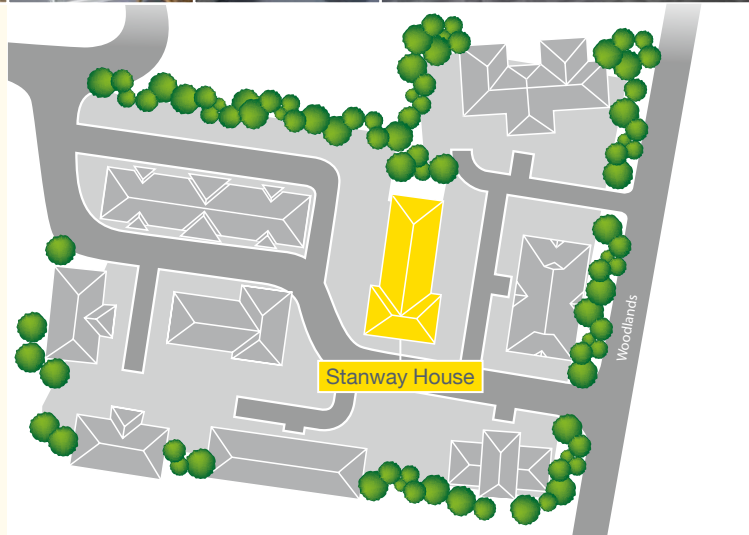


## Specification

The specification includes:

- Suspended ceilings incorporating new LED lighting
- Newly redecorated and re-carpeted with contemporary finishes
- Gas fired central heating
- Perimeter trunking
- WC and Shower facilities

Floor	Sq ft	Parking Spaces	EPC
First Floor	3,402	14	B(50)



## PROPERTY CONSULTANTS

**0117 317 1000**  
**www.alderking.com**

**Tom Dugay**  
tdugay@alderking.com

**Rebecca Harries**  
rharries@alderking.com

0117 923 9234

htc.uk.com

htc.uk.com

htc.uk.com

## Lizzie Boswell

lizzie.boswell@htc.uk.com

Natalie Bennett

natalie.bennett@htc.uk.com

Important Notice. These particulars do not constitute any offer or contract and although they are believed to be correct their accuracy cannot be guaranteed and they are expressly excluded from any contract. HD2479/AK/HTC/Hollister 11/21.