



INDURENT

PARK CHIPPENHAM

SN14 5BD
///GIVE.NEATLY.BROWSERS

Brand new warehouse available now

UNIT C112: 111,878 SQ FT (10,393.8 SQ M)



PV panels included at no extra cost, generating energy savings of up to £87,000 per annum*



Placing this building in the top 10% of UK warehouses for sustainability

Warehousing that Works.

*Based on as-built pv yield from epca+ requirement, assumes 100% full energy consumption in year 1 and unit rate of 30p per kwh

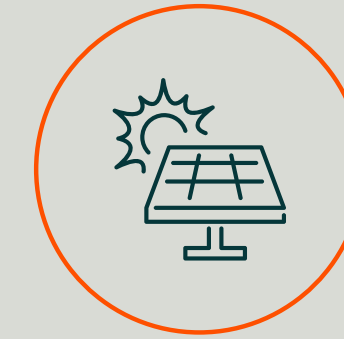
High performance space for your business.

If you're looking for a high-performing, sustainable building that works as hard as you do, then look no further. Unit C112 is a highly sustainable warehouse that will deliver benefits for your business, your people and the environment.

An ideal location for the South West

Unit C112 is situated in Indurent Park Chippenham, a strategically located 78.2 acre development site at junction 17 of the M4.

Offering excellent direct access to the national motorway network, Unit C112 offers occupiers an ideal opportunity in the heart of the South West's established logistics triangle.



50% of roof includes PV panels as standard, generating energy savings of up to **£87,000 per annum.***



Smart LED lighting helping you reduce energy consumption by up to **75%**.



10% roof lights reduce the need for additional daytime lighting and provide a light, bright environment for your employees.



BREEAM Excellent rating targeted placing this warehouse in the top **10%** of warehouses in the UK for sustainability.



With an EPC A+ rating, customers can lower their energy bills, all whilst delivering net zero carbon offices.

*data obtained using TM54 energy modelling software.



Why choose Unit C112?



Ideally located for national distribution.



Workforce catchment includes Bristol, Bath, North West Somerset, Wiltshire and Swindon.



Strategically located adjacent to M4, J17.



Chippenham main line rail station is just 11 minutes from Swindon and 22 minutes from Bristol.





LOCALISED WORKFORCE.

There are a significant number of residents living and working locally with a self containment rate of 77%.



STRONG AND DIVERSE LABOUR POOL.

There are a high proportion of people aged 16-44 (56%), of which 81% are economically active.



WELL CONNECTED TO LOCAL TRANSPORT.

With Chippenham rail station approximately 11 minutes from Swindon and public transport provision will include a bus service linking the site to Chippenham town centre and its surrounds.



Source: ONS



Warehousing that Works.

Schedule of accommodation.

UNIT C112	
WAREHOUSE INC. GF CORE	101,364 SQ FT (9,417 SQ M)
PLANT DECK/MEZZANINE	5,355 SQ FT (497.5 SQ M)
OFFICE	5,159 SQ FT (479.3 SQ M)
TOTAL	111,878 SQ FT (10,393.8 SQ M)
YARD DEPTH	50 M
CLEAR INTERNAL HEIGHT	12.5 M
LOADING DOCKS	10
LEVEL ACCESS LOADING DOORS	2
HGV PARKING	13
CAR PARKING	75
ELECTRIC CAR CHARGING POINTS	14
PLOT AREA	4.45 ACRES (1.80 HECTARES)



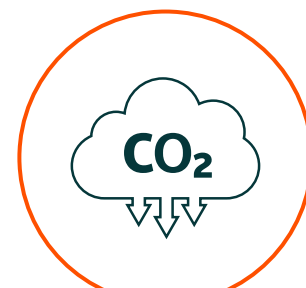
BREEAM Excellent rating achieved



50 kN sq/m floor loading



15% roof lights



Operationally net zero carbon to offices



On-site fitness trail



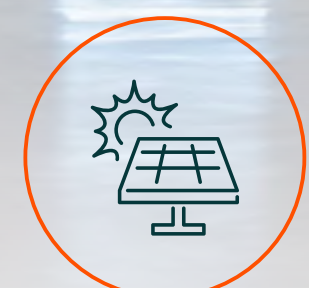
EPC A+ rated



EV car charging



Up to 12.5m clear internal height



50% of roof includes PV panels as standard



480 kVa of power supply

All floor areas are approximate gross internal areas. *Subject to final plan.



We know that people and the planet are important to you - they're important to us too.

That's why all our new buildings are built to our Indurent Standard and have sustainable features as standard, which will help you reduce operational costs whilst realising your ESG ambitions.

The sustainable nature of our buildings also means they are warm, bright spaces in which to work – which is good news for your employees and the environment.

LET'S TALK



HANNAH BRYAN-WILLIAMS

Development & Leasing Manager

📞 07971 386 918

✉ hannah.bryan-williams@indurent.com



Warehousing that Works.



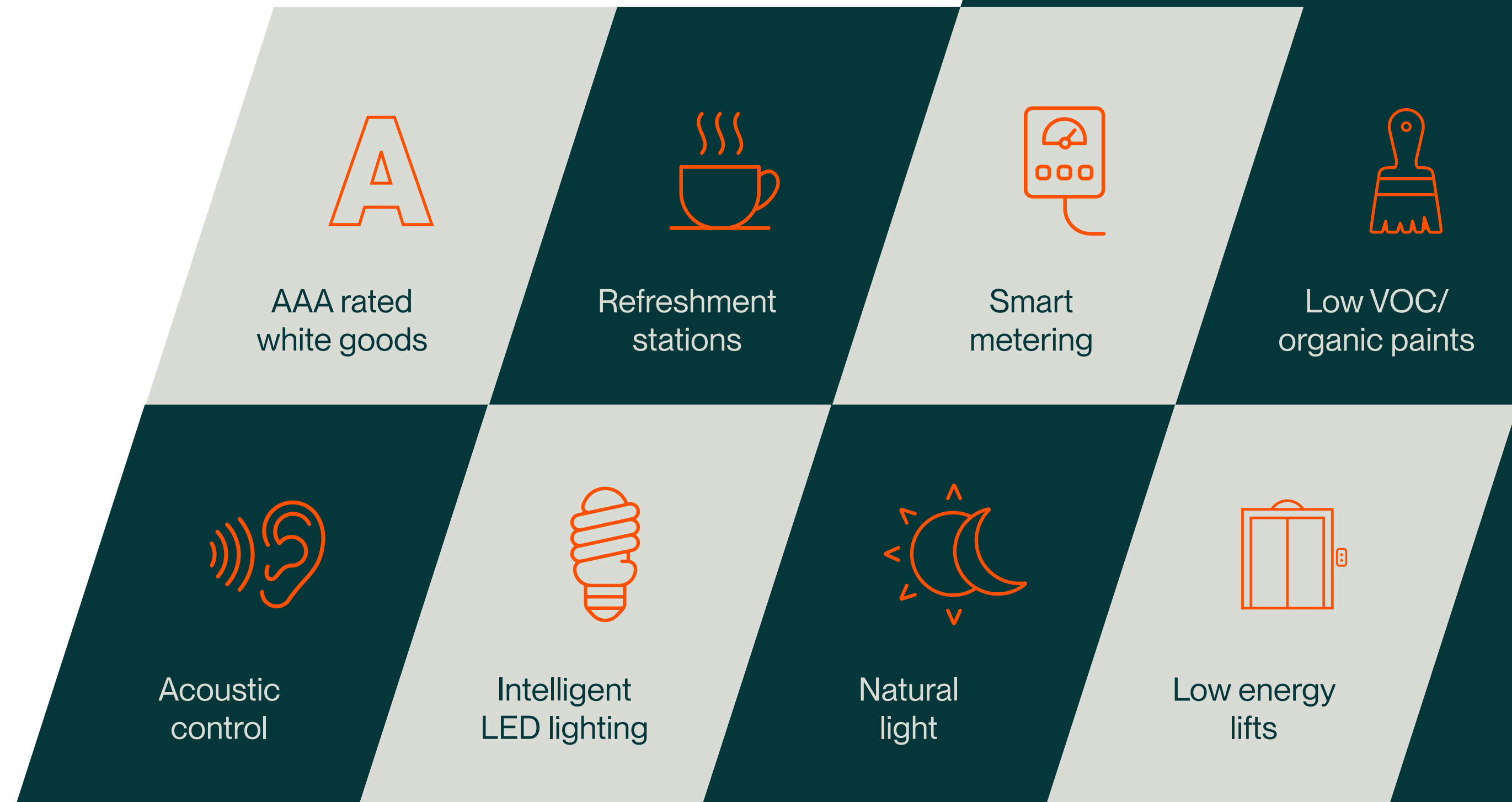
The Indurent standard.

Indurent Parks embody our core purpose – to change places and create better futures.

The Indurent Standard delivers improved quality, sustainable and consistent developments across the Indurent portfolio that impact positively on both the environment and local communities.

Through thoughtful and considered design, we have crafted a philosophy that we believe will have positive and tangible benefits for our customers.

- 75% enhancement on building regulations for air leakage
- 30% better than current requirements for embedded carbon
- Delivered by industry leading supply chain
- Sustainable environments addressing wellbeing
- Designed for flexibility and low operational cost
- Quality materials throughout
- Operational life cycle recycling
- Flexible office space for future fitout
- Low energy use
- Net carbon zero embedded





Sustainability at the core.

High quality amenity, office and warehouse specification, designed with the customer in mind, focusing on health and wellbeing, sustainability and net carbon reduction.



High performance space where you need it.



HANNAH BRYAN-WILLIAMS

Development & Leasing Manager

📞 07971 386 918

✉️ hannah.bryan-williams@indurent.com



CARYS ALLEN

Senior Development Manager

📞 07720 070 492

✉️ carys.allen@indurent.com

Misrepresentation Act 1967. Unfair Contract Terms 1977. The Property Misdescription Act 1991. These particulars are issued without any responsibility on the part of the agent and are not to be construed as containing any representation or fact upon which any person is entitled to rely. Neither the agent or any person in their employment has any authority to make or give any representation or warranty whatsoever in relation to the property. Images throughout are for indicative purposes only. ANTI MONEY LAUNDERING The successful lessee will be required to provide the usual information to satisfy the AML requirements when Heads of Terms are agreed. June 2024. TBDW 05279-29.



Andrew Ridler
M: 07990 891 015
E: aridler@alderking.com

James Gregory
M: 07917 188 006
E: jgregory@alderking.com



Claudia Harley
M: 07483 068 035
E: claudia.harley@dtre.com

Richard Harman
M: 07776 200 143
E: richard.harman@dtre.com



Chris Yates
M: 07850 658 050
E: chris.yates@jll.com

Giles Weir
M: 07973 400 806
E: giles.weir@eu.jll.com