

**VALE
PARK
SOUTH**
EVESHAM

PRODUCTION/ WAREHOUSE UNITS

2,100 sq ft to 28,200 sq ft

PHASE 1
BLOCKS A AND B
NOW UNDER CONSTRUCTION

- Planning Consent Granted for B1(c), B2 & B8 Uses
- Construction started on Blocks A and B
- Blocks C/D Available Leasehold or Freehold Turnkey



Opportunities to acquire brand new Production/Warehouse units positioned within Evesham's premier business location.

A joint venture between:

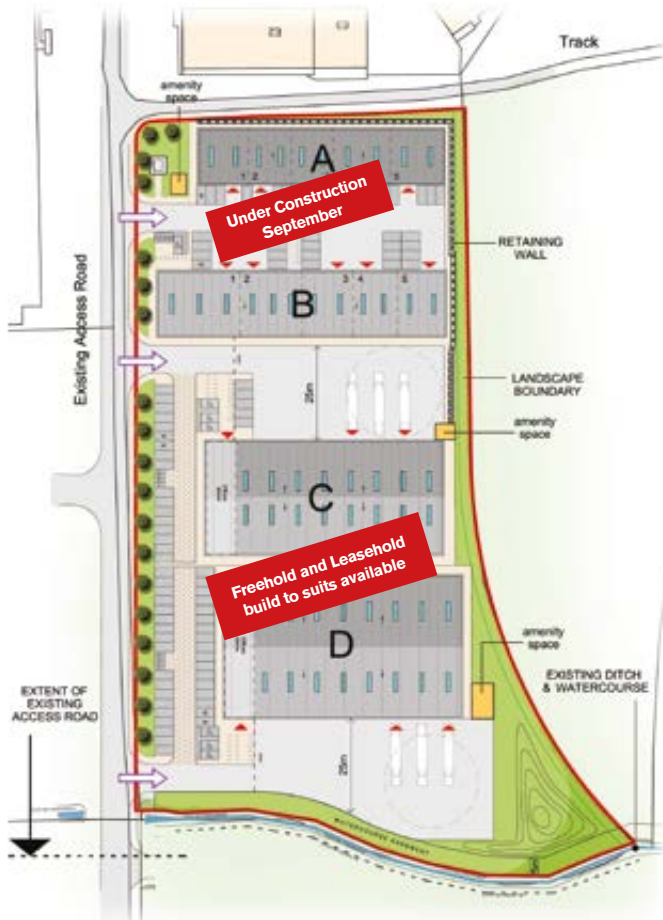


Vale Park, Evesham, Worcestershire, WR11 1GT

www.valeparksouth.co.uk

Location

Vale Park is superbly located directly off the A46 Evesham Bypass. Evesham town centre is approximately 2 miles north west, Junction 9 of the M5 Motorway is approximately 10 miles south west and Junction 6 of the M5 approximately 15 miles north west.



The Scheme

Vale Park South is the latest phase of development and extends to a total of 28 acres. Blocks A and B will provide will provide brand new production / warehouse units in two terraces. The specification includes;

- Minimum height of 6 - 8m
- Level access loading doors
- Suitable for business industrial or warehouse use
- 3 Phase power mains gas water and drainage
- Allocated on-site parking
- Practical Completion is anticipated Q2 2021

Accommodation Schedule

	OFFICE MEZZANINE	INDUSTRIAL / WAREHOUSE	TOTAL AREA	YARD DEPTHS	PARKING SPACES
UNIT	ft ²	ft ²	ft ²	m	
A1	500	2,000	2,500	12.5	3
A2	500	1,700	2,200	12.5	3
A3	400	1,700	2,100	12.5	3
A4	700	2,400	3,100	12.5	3
A5	600	2,100	2,700	12.5	4
B1	1000	4,000	5,000	17.5	5
B2	800	3,000	3,800	17.5	4
B3	700	2,500	3,200	17.5	4
B4	600	2,100	2,700	17.5	4
B5	600	2,300	2,900	17.5	4
C	2200	20,300	22,500	25.0	25
D	2800	25,400	28,200	25.0	38

Terms

Individual units in Blocks A and B are available on a freehold or leasehold basis.

Blocks C and D are available on either a leasehold or turnkey freehold basis.

VAT

Exclusive of VAT



A joint venture between:



For further information please contact:-



Charles Spicer
0121 634 8407
CASpicer@savills.com

Christian Smith
0121 200 4507
christian.smith@savills.com



Adrian Rowley
01452 627 133
ARowley@alderking.com



Tony Rowland
01386 765700
trowland@sheldonbosleyknight.co.uk

www.valeparksouth.co.uk

Important: These brief particulars have been prepared as agents for our clients and are intended as a convenient guide to supplement an inspection or survey. Their accuracy is not guaranteed. They contain statements of opinion and in some instances we have relied on information provided by others. You should verify the particulars on your visit to the property and the particulars do not obviate the need for a full survey and all the appropriate enquiries. Accordingly, there shall be no liability as a result of any error or omission in the particulars or any other information given.